



KREISJUGENDRING  
MÜNCHEN-STADT

---

# Den Ganztag kooperativ gestalten Raumnutzung und Raumgestaltung

# Grundschule Gustl-Bayrhammer in Freigham



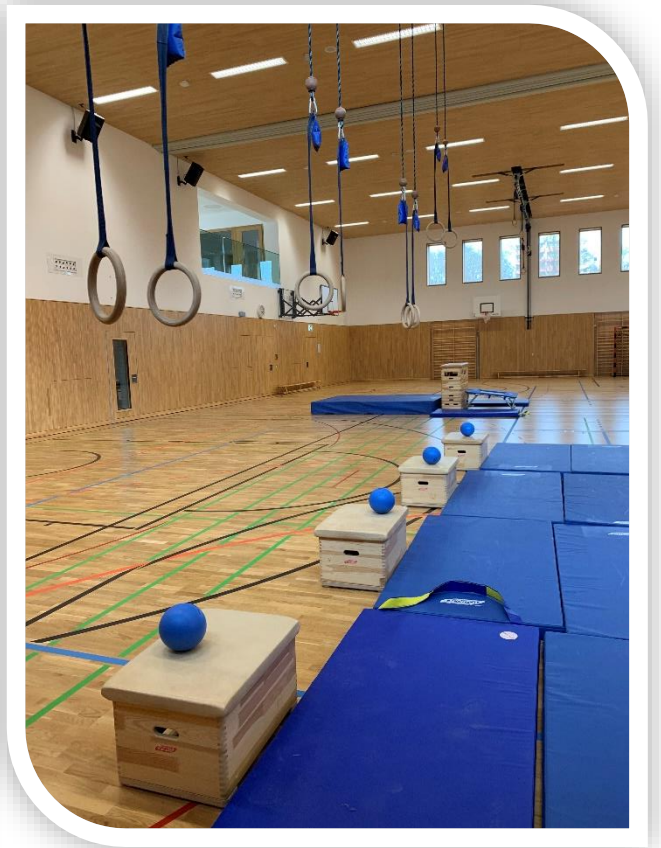
A solid teal vertical bar is positioned on the left side of the slide, extending from the top to the bottom.

# **PARTNERSCHAFTLICHE RAUMNUTZUNG**

Mit einander  
in der  
GUSTL

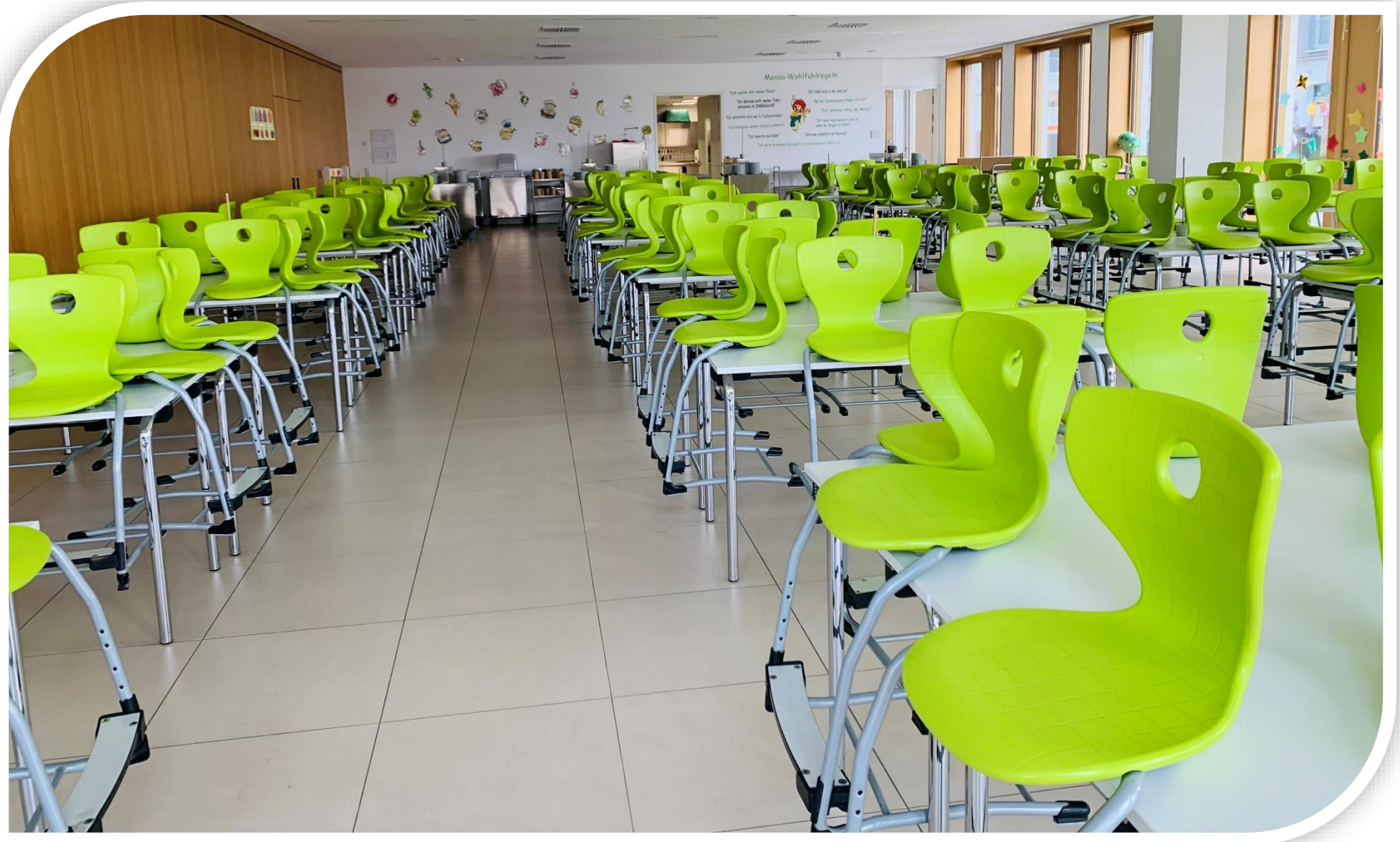
























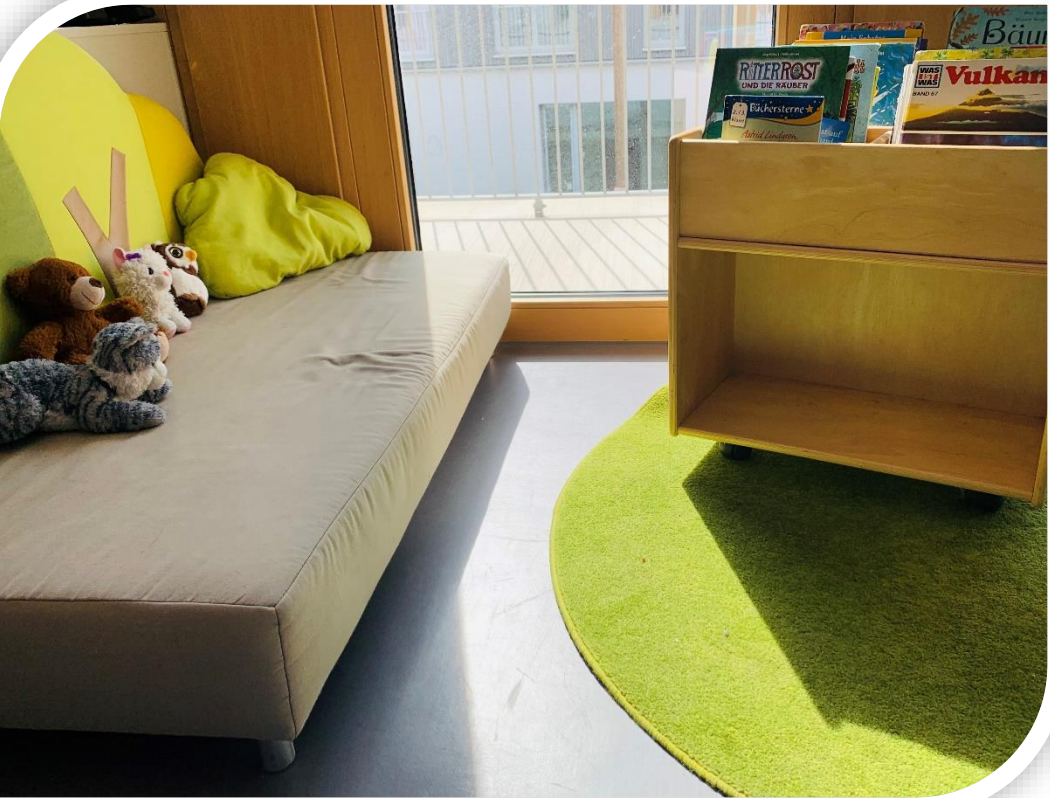




A solid teal vertical bar is positioned on the left side of the slide, extending from the top to the bottom.

# **MOBILITÄT UND FLEXIBILITÄT**





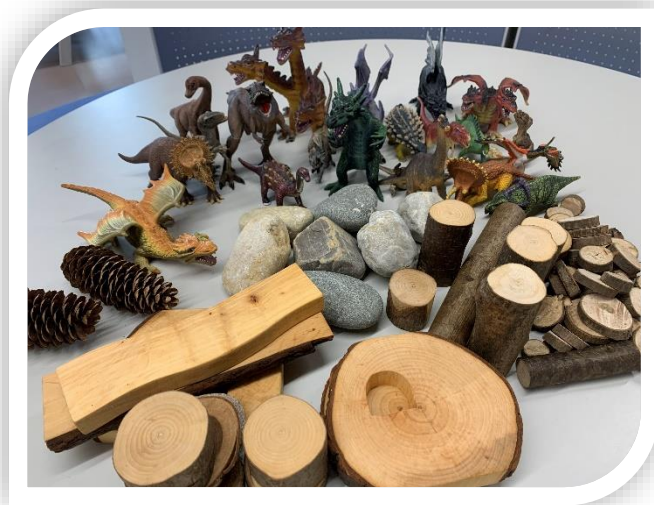












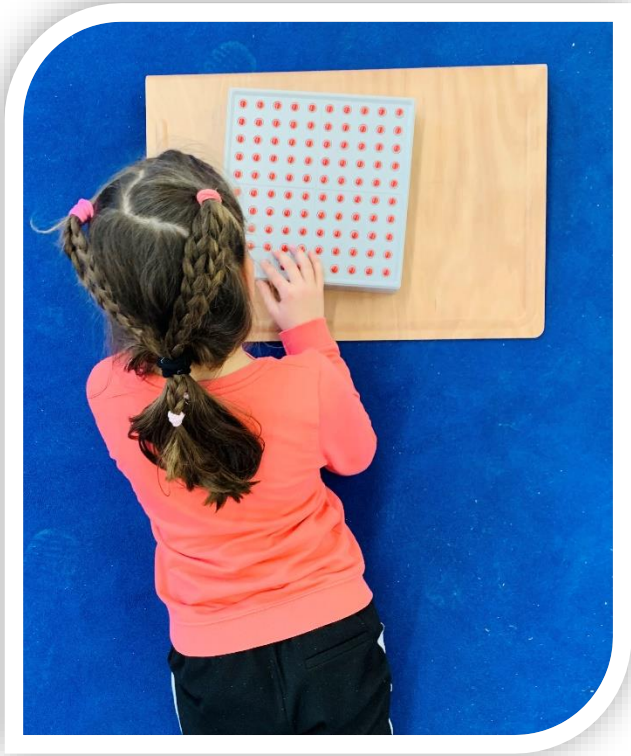


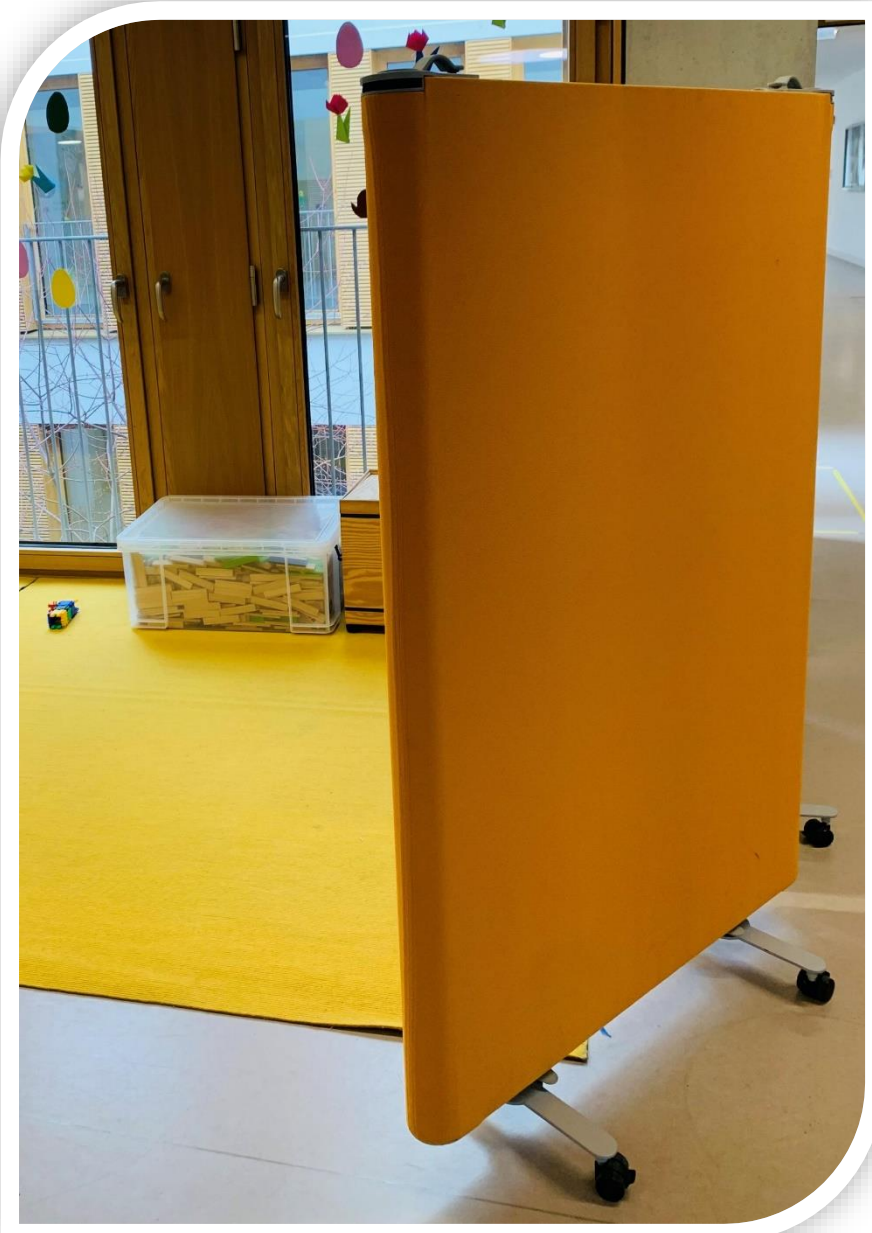






















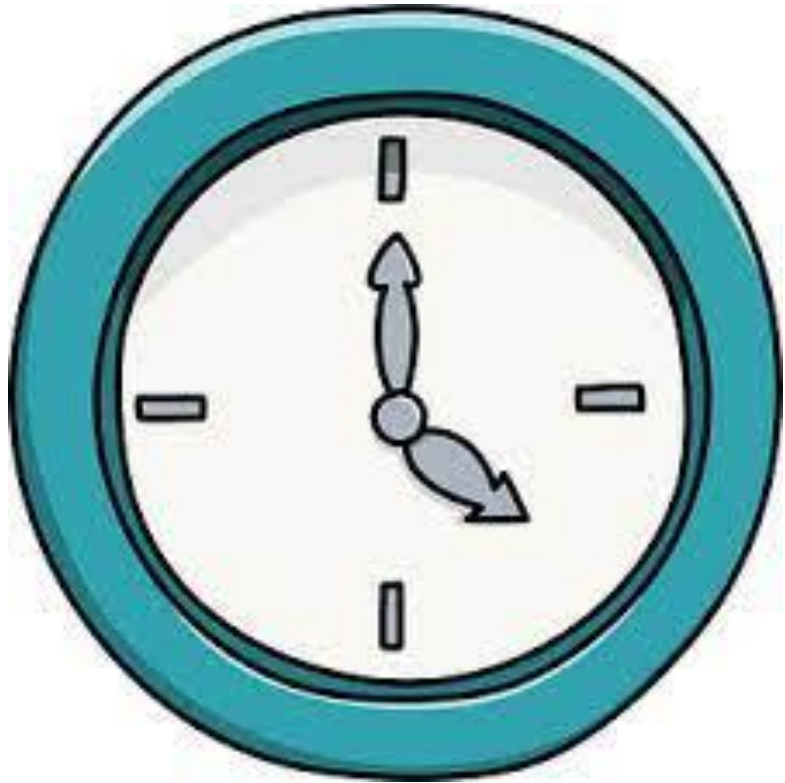






# **STOLPERSTEINE UND LÖSUNGEN**



















mante Coyoten  
Christbaumkug  
Carl grillt













**FRAGEN ???**